

# Gen3™ elevator

## A platform for possibility

---

GEN3 PEAK ELEVATOR



**OTIS**



A FULLY CONNECTED  
PLATFORM

# Solutions for your world

---

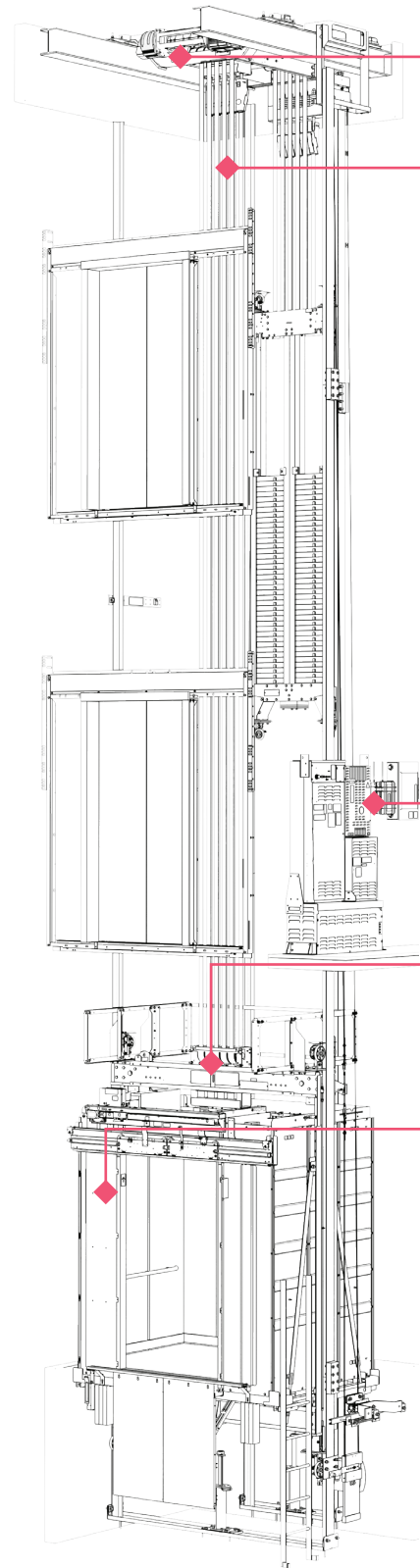
Our Gen3™ elevator blends convenience, style and performance to deliver a new passenger experience that adds value to any residential, commercial, hospitality, medical or industrial building.

## + Gen3 Peak™


The Gen3 Peak elevator combines elegant design and advanced engineering. It provides style, comfort, and speed so your tenants and visitors experience your building at its best.



# Gen3 Peak™ elevator



Travel height maximum	300'				
Maximum stops	30				
Speed (fpm)	200	350	400	450	500
Capacity (lbs)	2,500 – 5,000				

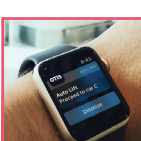
- 

**Compact gearless machine:** Combined with ReGen™ Drive, reduces energy consumption up to 75%.\*\*
- 

**Smooth coated steel belts:** Reduce noise from metal-to-metal contact of steel ropes to deliver a smooth, quiet ride.
- 

**Otis ONE™ IoT Digital Platform:** Provides the connected intelligence that defines the Gen3™ elevator.
- 

**Otis Cab Air Purifier:** Significantly reduces airborne bacteria and viruses.
- 

**Otis eView™:** Streams live, customizable infotainment to in-car display; connects to OTISLINE® in an emergency.
- 

**Otis eCall™ app:** Summon your elevator remotely for a touchless experience.
- 

**Compass 360® destination management:** Can cut travel time by up to half compared to traditional systems in high traffic conditions.

\*This model is one option for Gen3 Peak elevator

\*\*Compared to conventional systems without regenerative technology.

# A platform for possibility

**Every aspect of modern life is changing.** The ways we connect. The experiences we have. The places we live, work and play. The elevator needs to advance as well to harness the numerous possibilities of a more connected future – and Otis is taking you there.

The new Gen3™ elevator brings the promise of a connected platform into today. With the proven design of our best-selling Gen2® elevator and the built-in connectivity of our Otis ONE™ IoT digital platform, the Gen3 elevator is advancing in new ways.



**EXPERIENCES. ADVANCED.**

The latest connected technologies put passengers in control for a smooth, seamless ride, time after time.



**DESIGN. ADVANCED.**

Sophisticated aesthetics and a range of options fit most buildings and diverse style choices.



**HEALTH & SAFETY. ADVANCED.**

We prioritize safety and every passenger's health and well-being.



**CUSTOMER SUPPORT. ADVANCED.**

From resources and tools to guidance and expertise, Otis makes planning and managing smarter and simpler.



**SERVICES. ADVANCED.**

More personalized services through our Otis ONE IoT digital platform to keep you ahead of potential issues.

# Experiences. Advanced.

When we set out to create a new experience for our elevator, we designed it with people at the center of everything. The result? A smart, connected, sophisticated system that advances the passenger experience in as many ways as possible – and raises expectations for what an elevator can be.

## **+** INFORMED AND CONNECTED

The Otis eView™ display integrates seamlessly into the elevator cab and enables buildings to create customizable information and entertainment, along with OTISLINE® support in the event of an emergency.

## **+** A VIRTUAL CONCIERGE

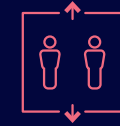
Compass® 360 elevator dispatch management guides passengers to the appropriate elevators and spaces within a building. Its SmartGrouping™ technology organizes travel between floors in a way that maximizes efficiency. It works faster by grouping passengers into elevators to reach floors in similar zones.

## **+** PUTTING PASSENGERS IN CONTROL

Our eCall™ app is giving each passenger their own personal elevator button, enabling them to use their smartphones to call an elevator in advance, so it's ready when they arrive.

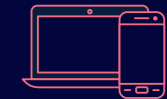
## **+** SEAMLESS MEETS TOUCHLESS

The Gen3 elevator offers options such as touchless technology to safely and quickly get passengers where they need to go.



## **PEOPLE FIRST**

The Gen3 elevator reflects human-centric innovation and design, offering safe and comfortable rides, promoting healthier environments and delivering confidence and convenience.



## **READY FOR WHAT'S NEXT**

The Otis ONE IoT digital platform design allows the Gen3 elevator to add many new future technologies. By enabling the flexible, seamless addition of technologies without a complete system upgrade, you can anticipate the challenges and opportunities of tomorrow.



## **EFFICIENCY ALWAYS**

The Gen3 elevator is designed with features that are more energy efficient than conventional elevators, achieving substantial energy savings and significant reductions in CO<sub>2</sub> emissions.

— OTIS —

# Destination dispatching

At Otis we want to help you deliver the best possible experience for everyone who uses your building. That means continually innovating and evolving our products to meet the demands of our ever-changing, fast-moving world.

Compass 360 is the third generation of our advanced destination management system. It's not just fast and efficient. It's also versatile and easy to install, so it's ideal for high-rise or low-rise, new builds or modernization.

## WHAT MAKES COMPASS 360 DIFFERENT?

Compass 360 takes elevator dispatching to the next level. New features include an improved dispatching algorithm, better cyber security and new security reader options. The touch screens have a one-piece glass face and no speaker holes.



### INTELLIGENT DESIGN

Compass 360 has been created for environments that host busy 21st Century lifestyles. We've balanced outstanding performance with the need for personalized solutions.



### STYLISH

Sophisticated design is at the heart of Compass 360. With user interface screens in a range of sizes, shapes and styles, the look and feel can reflect your building aesthetics or brand ID.



### SMART

You can dedicate access to particular elevators and floors, as well as deploying a VIP coded entry mode. Compass 360 also connects with your security and access systems.



### SIMPLE

Compass 360 acts as a virtual concierge, smoothing people's journeys. Passengers are directed to the most appropriate elevator by the easy-to-use, intuitive wall-mounted screens.



Surface mounted or  
flush mounted

eCall™ app - putting  
passengers in control

## Compass 360

New fixtures and touchscreens  
**THIRD GENERATION**

**RESPONSIVE CAPACITIVE TOUCH  
SCREEN TECHNOLOGY**

**REFINED AND MORE  
STREAMLINED THAN PREVIOUS  
GENERATION FIXTURES**

**ONE-PIECE GLASS FACE**

**HIDDEN SPEAKER**

**MULTIPLE INTEGRATED ACCESS  
CONTROL TECHNOLOGIES,  
INCLUDING MOBILE CREDENTIALS (OPTIONAL)**



# Design. Advanced.

As modern buildings continue to change, expectations for experiences within those buildings are changing too. The Gen3 elevator advances beyond the proven engineering of the Gen2 elevator so that your elevator system can deliver what your passengers need and expect today and tomorrow.

## + DESIGN THAT SHINES

No detail is overlooked. You get an enhanced aesthetic with design options that are customized to fit the needs of today's passengers and the unique styles of various types of buildings and enterprises. We're talking about sleek and modern styling, sophisticated lighting, quality materials and a multitude of opportunities to customize and create a modern, comfortable atmosphere for passengers.

## + EVOLUTION MADE EASY

As needs change and new features emerge, the connected platform allows for the seamless addition of future technologies and capabilities.

## + SUSTAINABLE BY DESIGN

Efficiency and sustainability are part of the design. The Gen3 elevator includes standard features – like the ReGen™ Drive, LED lighting and Sleep Mode – to help reduce energy usage and carbon footprint.

## + MORE FLEXIBILITY, MORE POSSIBILITY

From modern aesthetics to classic interiors, Gen3 can be tailored to fit your style. Our robust design has the ability to carry luxury aesthetic materials, allowing you to create a cab interior to match your design style. And if you're faced with architectural challenges such as moving large loads or dimensional constraints, our team will work with you to create a design solution for your project.



# Cab aesthetics

## CABS



### Steel cab

Vertical steel panels available in satin stainless steel, patterned stainless steel and baked enamel finish options



### Standard cab

Vertical steel panels with directly applied laminate finish



### Premium cab

Vertical high pressure laminate wall panels. Laminated woodgrains and solids, as well as stainless steel finish options



### Premium cab

Shown in Figured Mahogany with 6-LED Drop Ceiling (FC-6) with stainless steel finish. Handrails shown are flat (DH-155) finished in brushed stainless steel.

## CEILINGS



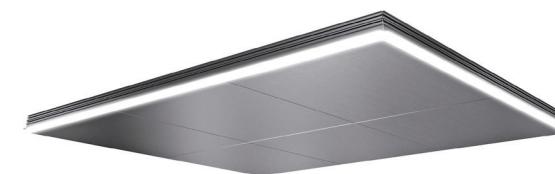
### 4-LED Flush Ceiling (FC-4)

Finish: painted white, painted black, stainless steel



### 6-LED Drop Ceiling (FC-6)

Finish: painted white, painted black, stainless steel



### LED Perimeter-Lit Ceiling (FC-10)

Finish: painted white, painted black, stainless steel

## HANDRAILS



### Flat Handrail (DH-155)

Flat bar available in brushed stainless steel



### Round Handrail (DH-156)

Round bar available in brushed stainless steel

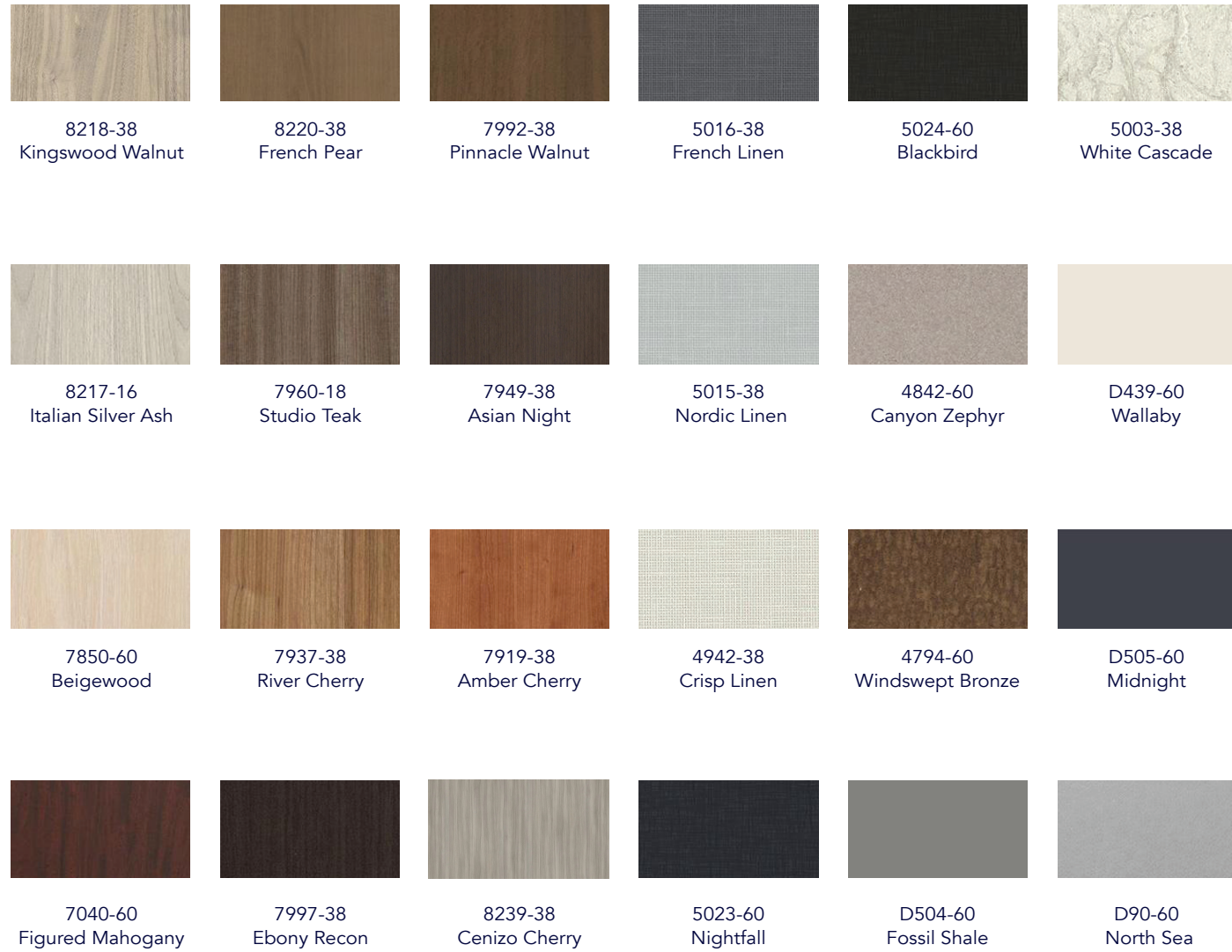


### Oval Handrail (DH-157)

Oval bar available in brushed stainless steel

# Finish selections

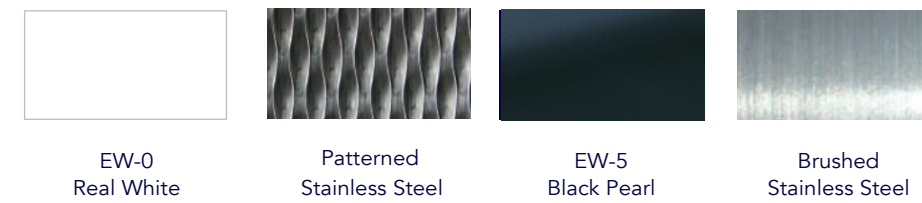
## PREMIUM CAB



## STANDARD CAB



## STEEL FINISHES



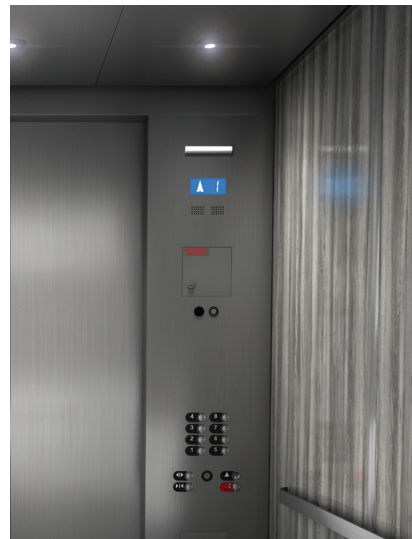
# Car fixtures

## CAR OPERATING PANEL

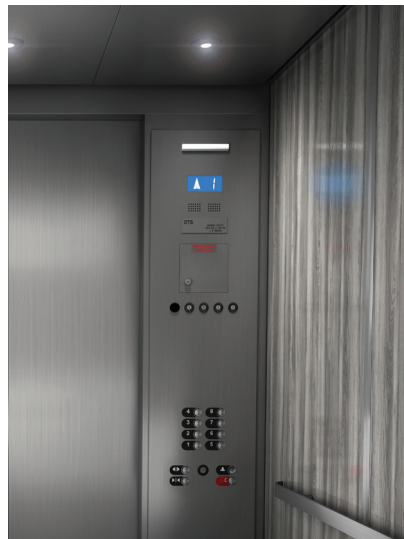
- + Blue and white LCD display
- + Brushed stainless steel
- + Locked firefighter
- + Optional service cabinet
- + Optional Otis ONE™ Pro - compliant with IBC 3001.2.2018 and newer and ASME A17.1-2019 and newer emergency elevator communication requirements



**Otis ONE Pro Luxury swing**  
Operating panel



**Standard swing**  
Car operating panel



**Luxury swing**  
Car operating panel



**Otis ONE Pro Standard swing**  
Operating panel

# Hall fixtures

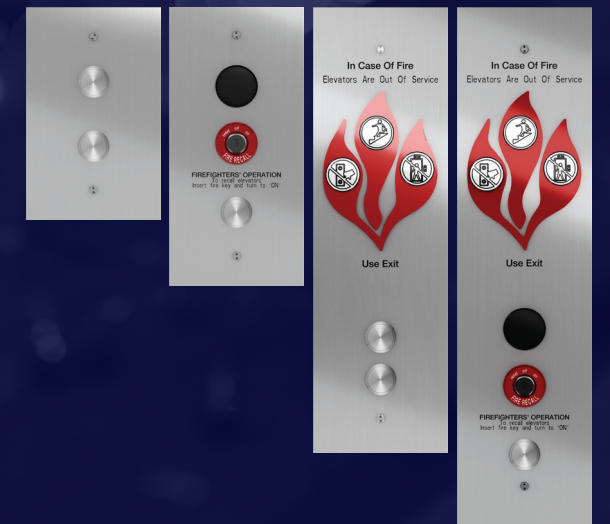
## HALL LANTERN & POSITION INDICATORS

- + LCD display
- + Brushed stainless steel



## HALL STATIONS

- + Wall and entrance mounted options
- + Optional - In Case Of Fire engraving and sign insert (wall mounted)
- + Combination fixtures available
- + Brushed stainless steel



# Health & safety. Advanced.

## Safety is at the core of who we are as a company.

In fact, it's how we got our start, but it doesn't end there. The Gen3 elevator was designed with passenger safety, health and well-being in mind.

From our Otis Cab Air Purifier and UV-C Lighting, to our range of touchless technologies, we are committed to providing innovative solutions that address your ongoing health and well-being.

Along with our purification products, the Gen3 elevator also comes equipped with key safety components to help provide a smooth and comfortable riding experience. You and your passengers can feel confident in the ride integrity with features like the Pulse™ system's continuous monitoring of coated steel belts and battery-powered backup systems.

**CLEAR THE AIR**  
The Otis Cab Air Purifier uses bipolar ionization technology, significantly reducing airborne bacteria and viruses in your elevator.

**A TOUCHLESS EXPERIENCE**  
You can customize your solution with a range of options for touchless button technology.

**SEAMLESSLY MOVING FORWARD**  
Through the Compass 360 destination management system with smart dispatching, we seamlessly move people throughout the building, helping to limit the number of people gathered together inside elevators or waiting in lobbies.

# Personalize your project

**CUSTOMER SUPPORT.  
ADVANCED.**  
We offer support at every stage of your process and are dedicated to helping you explore and implement solutions for today and enhancements for the future.

## EXPERIENCE A FULL SUITE OF PERSONALIZED DESIGN TOOLS AND RESOURCES

Whether you're an architect looking to configure models and make structural decisions, a developer navigating complex planning requirements or anyone in between, it's easier to explore new possibilities and make informed decisions based on the unique needs of your project.

YOUR PROJECT STAGE	YOUR OTIS TOOL
Design	<b>OTIS CREATE</b> Simplify elevator system planning with recommended configurations, customized performance details and more – all in a few clicks. <b>BIMCREATE™</b> Create customizable, configured 3D Revit® files for integration into overall building plans, rather than selecting from preexisting files.
Service	<b>CUSTOMER PORTAL</b> Get instant updates on the health, maintenance and account status of your elevator. Manage all your units in one place. <b>DEVELOPER PORTAL (OTIS APIs)</b> Connect your Otis data seamlessly to your existing building management applications.

## A CLOSE PARTNERSHIP, EVEN BEYOND CONSTRUCTION

We understand that every project is truly unique. Our teams can work with you at every step to ensure a smooth, seamless installation in buildings of all types and sizes. And it's not just new builds. In challenging modernization projects, we can help customers implement a Gen3 solution that enhances the building experience and opens the door to future digital technologies.

Our local teams are easy to work with and committed to delivering on your needs – and our promises. This includes customer-centric support from a financial and planning perspective.



# Services. Advanced.

---

The importance of elevator uptime is not new, and our data-driven approach is backed by years of history. The Gen3 elevator uses the latest technology, data, active monitoring and analytics to advance the entire service experience.

**It starts with one incredible innovation.** Fully integrated into the new Gen3 elevator, the Otis ONE IoT digital platform uses smart IoT technology to create more personalized, proactive service and is constantly checking in with your elevator.

# Otis ONE

## SERVICE THAT'S A STEP AHEAD

With Otis ONE IoT digital platform software-enabled service, you'll experience greater system transparency and predictability, enabling you to harness the power of advanced monitoring, big-data analytics and predictive maintenance to identify and address potential issues – sometimes before they happen.

## PROACTIVE COMMUNICATION

### Real-time notifications

Ongoing status updates and 24/7 proactive communication monitors operation of your equipment so you are notified as soon as an issue is detected.

### Informed repairs

Service requests are closed sooner with automatic alerts that provide mechanics accurate fault information and in many cases equip them with the parts needed before they arrive at your building.

## REASSURED PASSENGERS

### eView for emergencies

The in-cab display connects passengers with OTISLINE via video chat to provide greater peace of mind during an entrapment.

## PREDICTIVE INSIGHTS

To promote business continuity, mechanic visits are planned based on predictive maintenance algorithms so that in some cases, the problems can be fixed before they cause a shutdown.

## Faster, more informed repairs

We're empowering mechanics with automatic alerts, more data and new digital capabilities.

## AN ELEVATOR WITH A HEARTBEAT

The Gen3 elevator monitors equipment health and performance in real time, 24/7. The information is collected and analyzed against more than 30 years of Otis foundational data to uncover new insights that help better predict and solve issues, and avoid unexpected downtime.

## Transparent information

### OTIS CUSTOMER PORTAL

- Manage in real time every unit within your portfolio in a single view
- Visualize the benefits of predictive insights
- Leverage elevator health reports to prepare for your future investments
- Place online service requests

### OTIS DEVELOPER PORTAL

- Leverage the Otis open API to integrate the data you need into your own system
- Easy setup with clear software documentation and sample code



# One platform. So many possibilities.

With the Otis ONE IoT digital platform fully integrated, the Gen3 elevator is more than a way to move people – it's a platform for possibility. It's about having an intuitive solution that adapts to the current world of technology and is ready for the world to come.

The core of the Gen3 elevator, the Otis ONE IoT digital platform solution is designed to evolve. Powered by the Internet of Things (IoT), machine learning and cloud connectivity, with a subscription, future updates are only a download away. And as we invest in more tools, services and functionality, you can select from a menu of add-ons that make sense for your building and needs.



## The Otis ecosystem

The Otis ONE IoT digital platform is part of a powerful, expanding ecosystem of technologies and capabilities that integrate application programming interfaces (APIs) for service, operation, elevator calling and more. These integrations enable features like robot, voice and gesture interaction with expansion potential.

- +** **SERVICE DATA APIs**  
Integrate data into a building management system (BMS) to stay up to date with your elevator's availability, maintenance, repair and call back data.
- +** **REAL-TIME OPERATIONS DATA APIs**  
Building owners and facility managers can access real-time data to receive elevator status updates, performance insights and alarm information.
- +** **ELEVATOR CALLING APIs**  
Easily call and place elevator destination requests. And, as many businesses turn to service robots to improve the customer experience and productivity for their employees, APIs can connect service robots without hard-wired connections.

# Gen3 Peak™

## PASSENGER ELEVATOR

Travel height maximum	300' (91 m)				
Maximum stops	30				
Speed (fpm)	200 <i>(1.02 m/s)</i>	350 <i>(1.78 m/s)</i>	400 <i>(2.03 m/s)</i>	450 <i>(2.29 m/s)</i>	500 <i>(2.54 m/s)</i>
Capacity (lbs)	2,500 - 4,000				

Rated duty	2,500 lbs (1134 kg)	3,000 lbs (1361 kg)	3,500 lbs (1588 kg)	4,000 lbs (1814 kg)
<b>A</b> Clear car width <sup>1</sup>	6'-8" <sup>5/16"</sup> (2040 mm)			7'-8" <sup>5/16"</sup> (2345 mm)
<b>B</b> Clear car depth for front openings <sup>1</sup>	4'-3" <sup>1/8"</sup> (1299 mm)	4'-9" (1148 mm)	5'-5" (1651 mm)	
Clear car depth for front & rear openings <sup>1</sup>	4'-3" <sup>3/4"</sup> (1314 mm)	4'-9" <sup>5/8"</sup> (1463 mm)	5'-5" <sup>5/8"</sup> (1666 mm)	
<b>C</b> Clear cab height <sup>2</sup>	8'-0" (2438 mm) or 9'-7" (2921 mm)			
<b>D</b> Door width	3'-6" (1067 mm)			4'-0" (1219 mm)
Door type	Center opening or single slide			Center opening
<b>E</b> Door height	7'-0" (2134 mm) or 8'-0" (2438 mm)			
<b>F</b> Hoistway single width front non-seismic <sup>3</sup>	8'-6" (2591 mm)			9'-6" (2896 mm)
Hoistway single width front seismic <sup>3</sup>	8'-8" (2642 mm)			9'-8" (2946 mm)
Hoistway single width front & rear non-seismic <sup>3</sup>	9'-6" (2896 mm)			10'-6" (3201 mm)
Hoistway single width front & rear seismic <sup>3</sup>	9'-8" (2946 mm)			10'-8" (3252 mm)
<b>G</b> Hoistway double width front non-seismic <sup>3</sup>	17'-4" (5283 mm)			19'-4" (5893 mm)
Hoistway double width front seismic <sup>3</sup>	17'-8" (5385 mm)			19'-8" (5994 mm)
Hoistway double width front & rear non-seismic <sup>3</sup>	19'-4" (5893 mm)			20'-4" (6198 mm)
Hoistway double width front & rear seismic <sup>3</sup>	19'-8" (5994 mm)			20'-8" (6300 mm)
<b>H</b> Hoistway depth for front openings	6'-6" (1981 mm)	7'-0" (2134 mm)	7'-8" <sup>1/2"</sup> (2350 mm)	
Hoistway depth for front & rear openings	6'-2" <sup>7/8"</sup> (1902 mm)	6'-8" <sup>3/4"</sup> (2051 mm)	7'-4" <sup>3/4"</sup> (2254 mm)	

<b>I</b> Total overhead <sup>4,5</sup>	200 fpm (1.02 m/s)	350 fpm (1.78 m/s) - 500 fpm (2.54 m/s)	<b>K</b> Optional control closet or room <sup>3</sup>
8'-0" (2438 mm) cab height	15'-6" (4724 mm)	16'-2" (4928 mm)	Control closet
9'-7" (2921 mm) cab height	17'-1" (5207 mm)	17'-9" (5410 mm)	Control room
<b>J</b> Minimum pit depth	5'-0" (1524 mm)	5'-6" (1676 mm)	Control room-duplex
			Hoistway depth x 3'-10" (1168 mm)
			Hoistway depth x 5'-9" (1753 mm)
			Hoistway depth x 7'-6" (2286 mm)

1. Clear cab dimensions may vary depending on interior finishes.

2. Clear cab height varies by ceiling type.

3. Please consult your local Otis representative regarding multi-car groups or smaller dimensions.

4. For seismic areas, multi-car groups, or pre 2008 ASME A17.1 Safety Code for

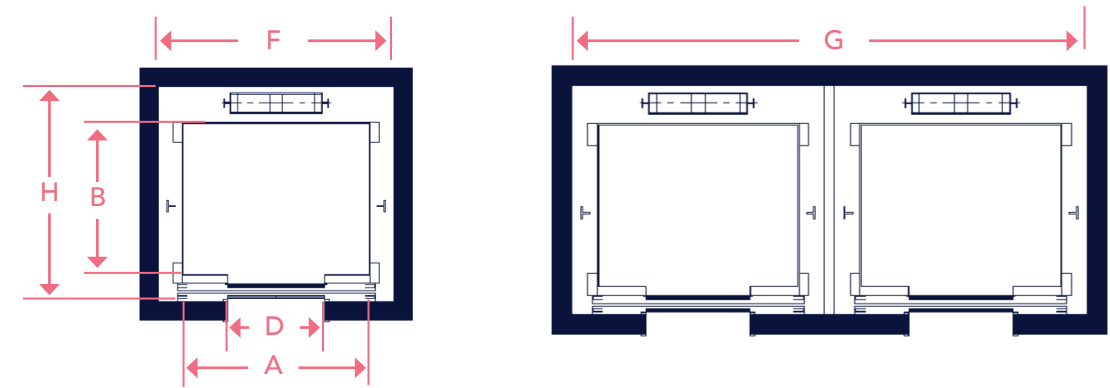
Elevators, please contact your Otis representative for clear overhead dimensions.

5. Overhead machine rooms are also available. Please contact your Otis representative.

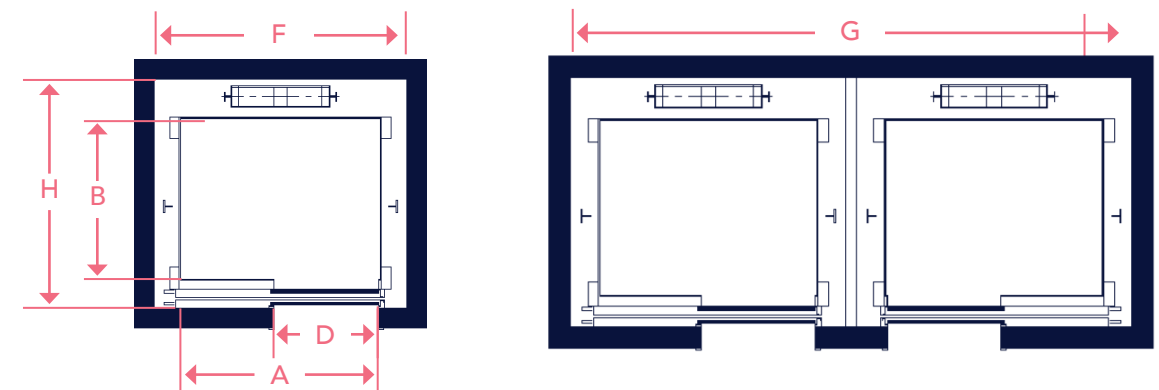
### IMPORTANT:

To assist in your planning, we recommend that you call your Otis representative at the beginning of the project.

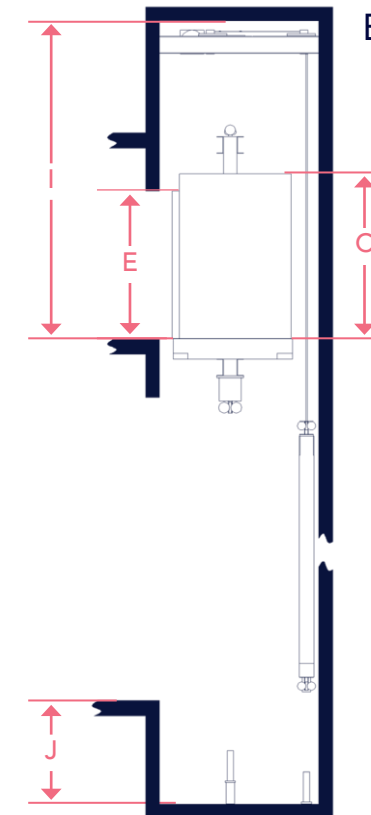
### Center Opening Hoistway Plan



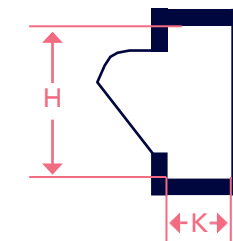
### Single-Speed Side Slide Hoistway Plan



### Elevation



### Control Room/Closet



# Gen3 Peak™

## SERVICE ELEVATOR

Travel height maximum	300' (91 m)				
Maximum stops	30				
Speed (fpm)	200 (1.02 m/s)	350 (1.78 m/s)	400 (2.03 m/s)	450 (2.29 m/s)	500 (2.54 m/s)
Capacity (lbs)	4,000 - 5,000				

Rated duty	4,000 lbs (1814 kg)	4,500 lbs (2041 kg)	5,000 lbs (2268 kg)	5,000 lbs AIA (2268 kg)
<b>A</b> Clear car width <sup>1</sup>	5'-8 5/16" (1735 mm)		5'-11 5/16" (1811 mm)	5'-8 5/16" (1735 mm)
<b>B</b> Clear car depth for front openings <sup>1</sup>	7'-5" (2261 mm)	7'-11" (2413 mm)	8'-6" (2591 mm)	9'-0 1/8" (2747 mm)
Clear car depth for front & rear openings <sup>1</sup>	7'-5 5/8" (2276 mm)	7'-11 5/8" (2428 mm)	8'-6 5/8" (2606 mm)	9'-0 3/4" (2762 mm)
<b>C</b> Clear cab height <sup>2</sup>	8'-0" (2438 mm) or 9'-7" (2921 mm)			
<b>D</b> Door width	4'-0" (1219 mm)		4'-6" (1371 mm)	
Door type	Two-speed			
<b>E</b> Door height	7'-0" (2134 mm) or 8'-0" (2438 mm)			
<b>F</b> Hoistway single width non-seismic	8'-4" (2540 mm)		8'-7" (2616 mm)	8'-4" (2540 mm)
Hoistway single width seismic	8'-6" (2591 mm)		8'-9" (2667 mm)	8'-6" (2591 mm)
<b>G</b> Hoistway double width non-seismic	17'-0" (5182 mm)		17'-6" (5334 mm)	17'-0" (5182 mm)
Hoistway double width seismic	17'-4" (5283 mm)		17'-10" (5436 mm)	17'-4" (5283 mm)
<b>H</b> Hoistway depth for front openings	9'-0" (2744 mm)	9'-6" (2896 mm)	10'-1" (3074 mm)	10'-7" (3227 mm)
Hoistway depth for front & rear openings	9'-10 5/8" (3013 mm)	10'-4 5/8" (3165 mm)	10'-11 5/8" (3343 mm)	11'-5 3/4" (3499 mm)

<b>I</b> Total overhead <sup>4,5</sup>	200 fpm (1.02 m/s)	350 fpm (1.78 m/s) - 500 fpm (2.54 m/s)
8'-0" (2438 mm) cab height	15'-6" (4724 mm)	16'-2" (4928 mm)
9'-7" (2921 mm) cab height	17'-1" (5207 mm)	17'-9" (5410 mm)
<b>J</b> Minimum pit depth	5'-0" (1524 mm)	5'-6" (1676 mm)

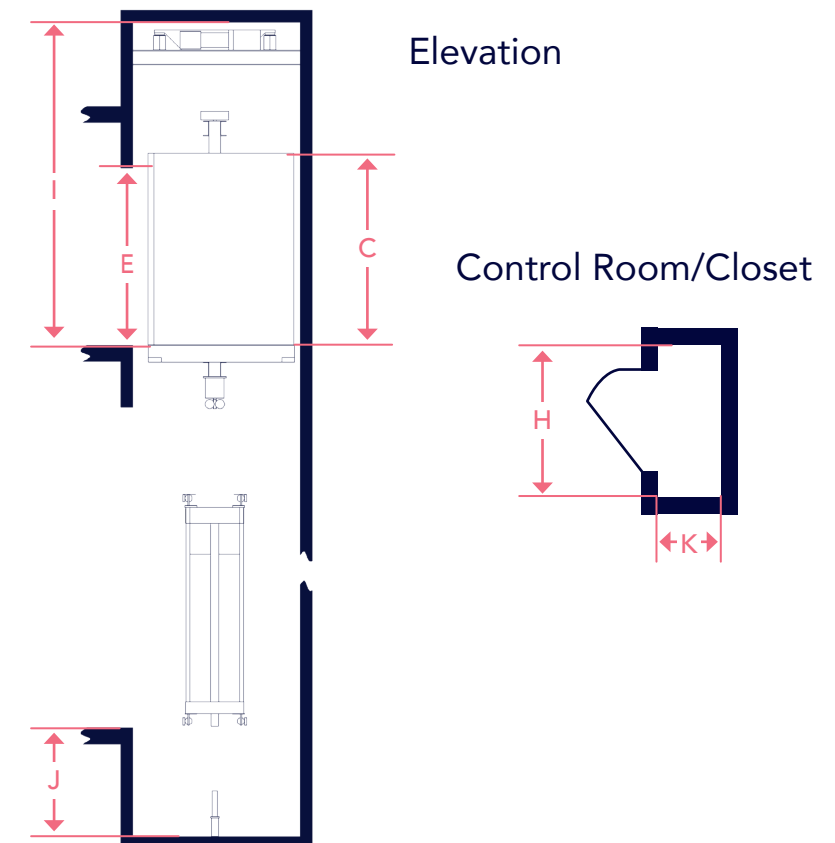
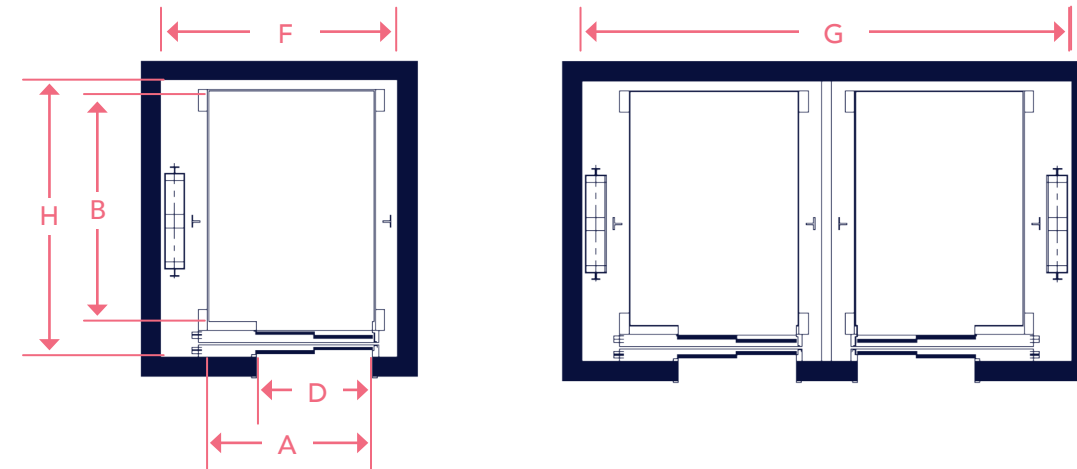
<b>K</b> Optional control closet or room <sup>3</sup>	
Control closet	Hoistway depth x 3'-10" (1168 mm)
Control room	Hoistway depth x 5'-9" (1753 mm)
Control room-duplex	Hoistway depth x 7'-6" (2286 mm)

1. Clear cab dimensions may vary depending on interior finishes.  
2. Clear cab height varies by ceiling type.  
3. Please consult your local Otis representative regarding multi-car groups or smaller dimensions.

4. For seismic areas, multi-car groups, or pre 2008 ASME A17.1 Safety Code for Elevators, please contact your Otis representative for clear overhead dimensions.  
5. Overhead machine rooms are also available. Please contact your Otis representative.

**IMPORTANT:**  
To assist in your planning, we recommend that you call your Otis representative at the beginning of the project.

### Two-Speed Side Slide Hoistway Plan



---

Otis gives people freedom to connect and thrive in a taller, faster, smarter world. The global leader in the manufacture, installation and servicing of elevators and escalators, we move 2 billion people a day and maintain more than 2.1 million customer units worldwide – the industry's largest Service portfolio. You'll find us in the world's most iconic structures, as well as residential and commercial buildings, transportation hubs and everywhere people are on the move. Headquartered in Connecticut, USA, Otis is 68,000 people strong, including 41,000 field professionals, all committed to meeting the diverse needs of our customers and passengers in more than 200 countries and territories. To learn more, visit [www.otis.com](http://www.otis.com) and follow us on LinkedIn, Instagram, Facebook and Twitter @OtisElevatorCo.